



Yesterday's Maximum is Today's Minimum!

## PCCG340 LOW VOLTAGE CONCENTRATOR



### TECHNICAL DATA

» Reference Voltage	Vin=3*230/400VAC
» Voltage Range	0.8-1.15 Un
» Reference frequency	50Hz +/-5%
» RTC Accuracy	< 0.5s/d
» PLC baud rate	2400bps
» Power consumption	≤10VA, <5W phase
» Life time	>15 years
» Failure ratio	<0.3%
» Operation Temp	-25 °C - 60 °C
» Storage Temp	-40 °C - +85 °C

### GENERAL

- PCCG340 (Data Collector Unit) acts as a PLC/GPRS Gateway. It corresponds with up to 2000 Electricity meters via PLC (Powerline Communication) and transmits them to the main station (via GPRS/LAN/RS485). The unit acts as protocol convertor and is capable to operate at multi-protocol. The unit stores all meter readings in a flash memory. The Concentrator includes metering capability (class I - optional).

### BASIC FUNCTIONS

- The Concentrator works on 3p4w. In case of a phase loss, it still functions.
- In case of power failure, it stores the data in the non-volatile memory.
- Performs automatic time synchronization to all meters.
- Remote firmware upgrade is available.
- Runs automatic scheduled tasks and transfers the information to the central station.
- Includes digital input and outputs to read or activate external devices.
- □ Is a capable sending immediate alert on meter tampering
- □ Provides information on GPRS signal quality back to the control center
- □ The following communication interfaces are supported:
  - Upload: GPRS: max 85.6kbps, Support Quad Band GSM
  - LAN 100Mbit (optional)
  - RS485: 9600bps
  - RS232: 9600bps
  - IR: 1200bps
  - Download: PLC: 2400bps
- □ Collects max 2000 meters, and stores daily data of last 30 days.
- □ Stores last 12 months of monthly data
- **Always on-line:** When power is on; the Concentrator connects to the main station automatically. If the connection is lost, the Concentrator will reestablish the connection. To maintain connection, the Concentrator transmits heart packages.



Yesterday's Maximum is Today's Minimum!

## SPECIFICATIONS

<b>Voltage</b>	
Reference Voltage	3x230/400V
Voltage Range	0.8...1.15Un
<b>Frequency</b>	
<b>Power Consumption</b>	
In voltage Circuit	≤10VA
In current Circuit	≤2.5VA
<b>Environmental Influences</b>	
Temperature Range	
Specified operation	-25 oC to +60 oC
Limited operation	-40 oC to +70 oC
Storage	-40 oC to +85 oC
Humidity	≤95%
Impermeability to IEC60529	IP54
<b>Real Time Clock (RTC)</b>	
Accuracy	< 0.5s/d
Backup time	15 years
<b>Insulation Strength</b>	
Impulse voltage 1.2/50us	to IEC 62052-11
Voltage value	6kV
<b>Electromagnetic Compatibility</b>	
Electrostatic Discharges	to IEC 61000-4-2
Contact discharge	10kV
Electromagnetic RF Fields	to IEC 61000-4-3
80MHz...2GHz	10 and 30V/m
Fast transient burst	to IEC 61000-4-4
Voltage and current circuits	4kV
Auxiliary circuits > 40V	2kV
Surges	to IEC 61000-4-5
Voltage and current circuits	4kV
Auxiliary circuits > 40V	1kV
Conducted voltage induced by radio-frequency field	to IEC 61000-4-6
150kHz to 80MHz	10V
Radio interference suppression	
to CISPR 22	Class B
<b>Display</b>	
LCD	dot matrix
Distinguish ability	160x160
Contents	8 lines of 20 characters
Background lighting	white
<b>Communication Interfaces</b>	
Optical Interface (IR)	to IEC 62056-21
RS485 Interface	To ISO-8482
PLC Interface	Narrow band
GPRS Interface	TCP/UDP

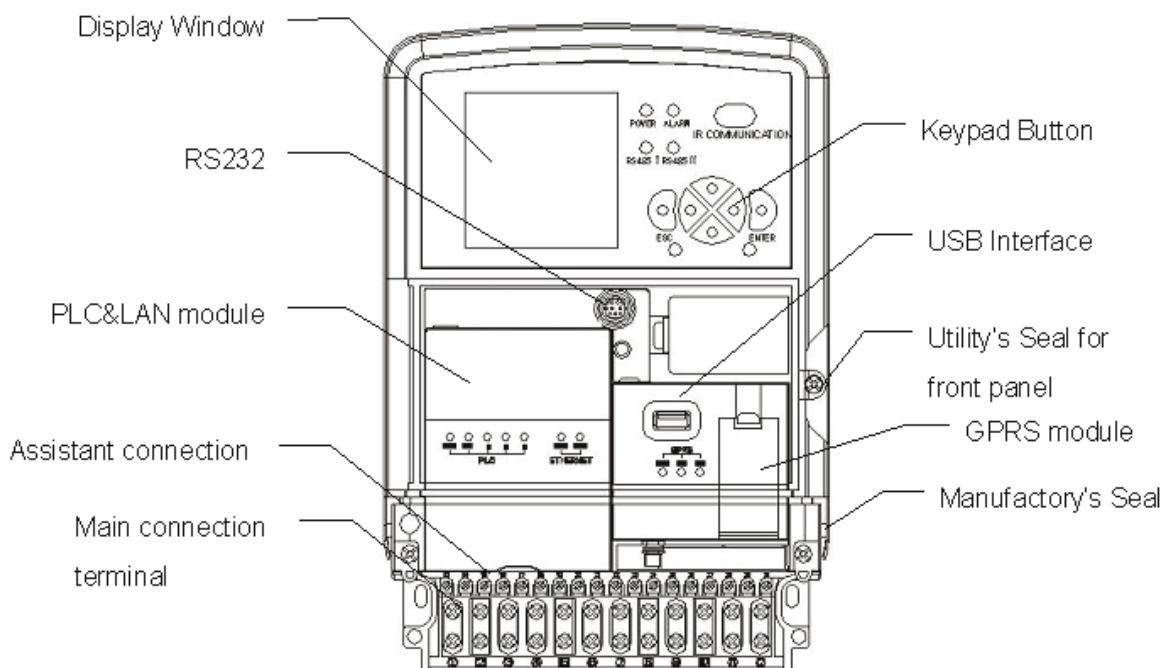




Yesterday's Maximum is Today's Minimum!

LAN	Communication with center station
RS232 Interface	Used for service on site
USB Interface	Used for Software download
<b>Data Storage Capacity</b>	
FLASH size	256Mb
<b>Data Storage Capacity</b>	
Weight	Approx.3.2kg
Dimensions (LxWxD)	290x180x95mm

## Interface Diagram



## Part Numbering

PCCG 340 G M

G GPRS  
 L LAN  
 M Metering capability

